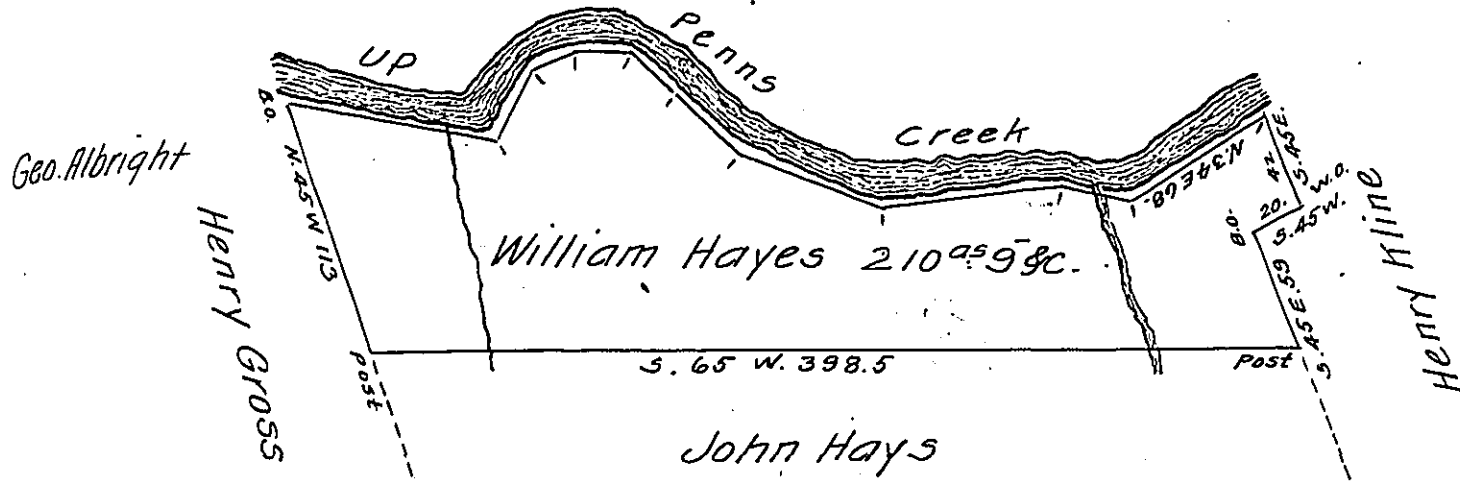


Cor. & Dist. Down Creek

- N. 34. E. 68.
 - N. 73. E. 34.
 - N. 58. E. 74.
 - N. 84. E. 68.
 - S. 67. E. 36.
 - S. 78. E. 28.
 - N. 68. E. 21.
 - N. 36. E. 20.
 - N. 5. E. 37.
 - N. 77. E. 90.
- 476 pr.



Situate in Union township Union (late Berks) County. Surveyed the 25th day of ^{September} 1832 by virtue of an Order granted to William Hayes dated the 3^d day of April 1769. N^o 2063. Containing two hundred & ten Acres & Nine tenths of an Acre with the Usual Allowance &c.

Note. The Same tract of land was Surveyed the 10th day of August 1769 for John Ord in pursuance of his Order dated the 3^d day of April 1769. N^o 568. And now Owned & Occupied - Henry Gross, Henry Kline, James Merrill & others in right of the Said John Ord.

To Jacob Spangler Esq^r }
 Surveyor General Penn^a } W^o Jn^o Hayes. Con.

IN TESTIMONY that the above is a copy of the original remaining on file in the Department of Internal Affairs of Pennsylvania, made conformably to an Act of Assembly approved the 16th day of February, 1833, I have hereunto set my Hand and caused the Seal of said Department to be affixed at Harrisburg, this thirteenth day of August 1908.

Henry Howard
 Secretary of Internal Affairs.